

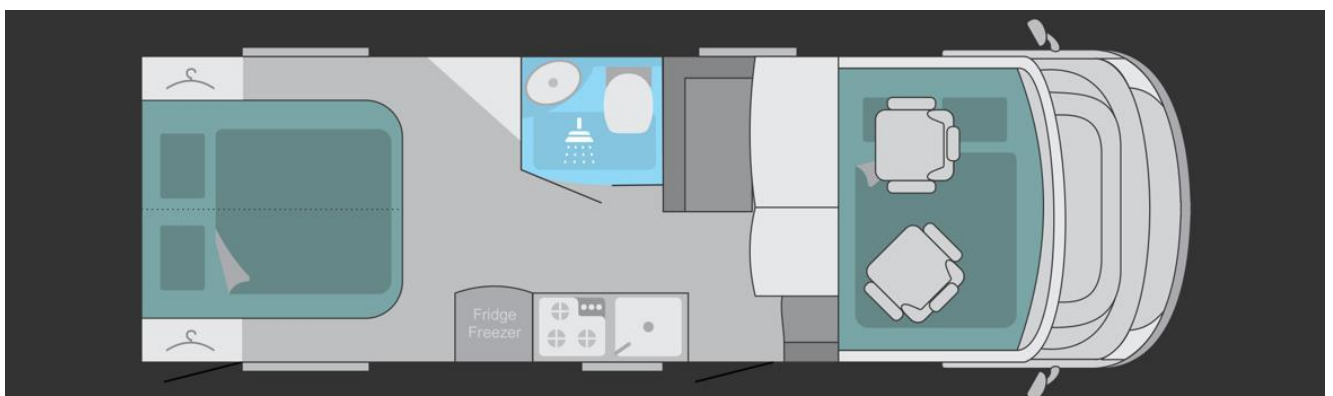
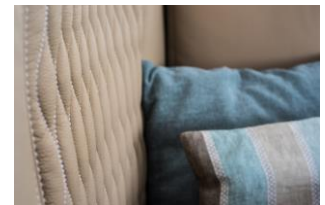
Glamper^{RV}



GlamperRV.co.uk

Glamper^{RV}

Based on a Burstner Visio i720g, the 2016 GlamperRV was first registered in April 2016 and is available to purchase in September 2018 with mileage of 40,000. The 2016 GlamperRV is a 4 berth, 7.2metre long, luxury A-class with a rear fixed double bed over a large garage, a drop down double bed over the cab and comes packed with many extras detailed overleaf. As with all GlamperRV it is totally self-sufficient, comes in the iconic grey colour and luxurious interior.



Glamper^{RV}

Technical specification:

Automatic gearbox with Fiat Ducato Euro 5+ 2.3l 150 Multijet engine.

Aluminium trim to dashboard, Instrument panel with chrome bezels, Leather steering wheel and gear knob, Driver & Passenger airbag, Electrically adjustable and heated mirrors, Climate controlled automatic cab air conditioning, Cruise control. 16" Alloy wheels in Black polish design. Cab integrated blinds. LED daytime running lights. Pioneer AVH-5600BT multi media system including Reversing camera with integrated colour monitor in dashboard.

Oak/white furniture and upholstered in cream leather upholstery including Pilot front cab seats. White manual 4.5 metre roll out awning. Truma Combi 6 gas and electric heating. Wide habitation door with integrated window and bin. Winter pack including insulated and heated waste water tank and valve, electric underfloor heating and heated seats for driver and passenger seats. Gas oven & grill, kitchen hob extractor fan, fridge freezer. Dometic living area air conditioning. 4G mobile WIFI. Twin leisure batteries powering, via inverter and charged by solar panel, Nespresso machine and hair dryer. Vodafone automotive tracker. External shower with mixer tap. External power point.

Dimensions

Length – 7.25m, Width - 2.20m, Height - 2.85m

Plated at 3500kg with opportunity to increase to 3850kg.

Glamper^{RV}



Price: £63,995